

CMM CIRCULAR

Summer 2021



IN THIS ISSUE

PG. 2

- Important Reminders
- Feature: Kelly Klick, Artist

PG. 3

- Office Hours and Closures
- Council News

PG. 4

- Addressing Racism in the Healthcare System
- Self-Regulation
- CMM's Response to the TRC's Calls to Action

PG. 5

- Random Practice Assessment Next Selection
- College Emails

Photo of Barrier Bay in the Whiteshell
courtesy of Janice Erickson

IMPORTANT REMINDERS

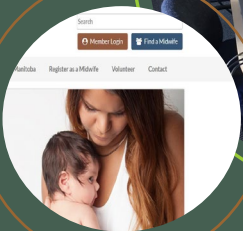
CPR • NRP • ES • FHS

All the above certifications need to be current and provided to the CMM by March 31st. There is no grace period.

The Quality Assurance Committee has conducted a survey of available certificate courses and has determined that online CPR courses will be accepted until further notice. Requirements for other required courses remain unchanged.

Members who are not current may be denied renewal or return to practice. Please ensure you plan ahead.

Remember that these mandatory courses do not count towards your requirements for additional professional development. You must complete 20 hours/year or 60 hours/3 years of additional professional development in order to meet the requirements of Standard on Quality Assurance.



Feature: Kelly Klick, Artist



RESPECT

Acrylic print from placenta of the last baby delivered by artist. Kelly Klick, 23"x 19", 2021

This piece is a part of a series about the significance of the placenta. The series is titled "Mother Cake" and can be seen on the artist's website.

Artist Statement:

When I make art, I think about herstory. By combining historical craft methods with recent paintings and sculptures I examine, explore and am inspired by the lives of women.

Kelly was a registered midwife from 2003 until she retired from midwifery in Manitoba in the summer of 2020. As a midwife, Kelly helped to make sure that women and babies in Manitoba had access to midwifery care and held several major roles while the profession was finding its feet. She now lives in Pinawa, Manitoba and enjoys the natural beauty the area provides. Her artwork is inspired by her 20 plus years as a mother, childbirth educator and midwife. Her work will be exhibited in Brandon, Pinawa and Neepawa, Manitoba in fall and winter 2021/22.

For more information about Kelly's artwork, visit www.kellyklickart.ca.

OFFICE HOURS

9:00 a.m. to 4:00 p.m. Monday to Friday
(closed on Statutory Holidays)

Due to part-time status of all staff and semi-virtual operation during the pandemic, please email admin@midwives.mb.ca or call the office at (204) 783-4520 if you need to arrange an in-person meeting.

OFFICE CLOSURES

Thursday, July 1 – Canada Day

Monday, August 2 – Terry Fox Day

Monday, September 6 – Labour Day

Monday, October 11 – Thanksgiving

Thursday, November 11 – Remembrance Day

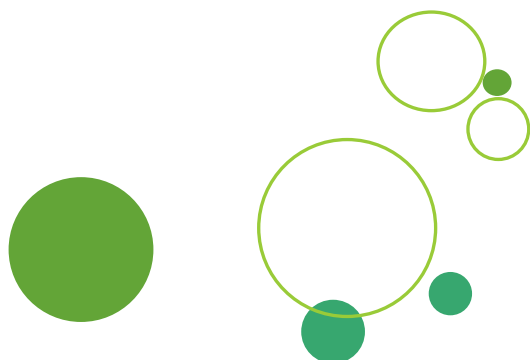
MOVING HOME OR OFFICE?

Changes to your work or personal address, phone number or email must be reported to the CMM. This can all be done via updating your profile in the Member Portal.

Additionally, please be reminded that Manitoba Health must be informed of changes in employment status or practice location. For more information email practitionerregistry@gov.mb.ca.

CHANGING PRACTICE STATUS?

Changes in practice status must be requested via the Member Portal. If you are planning a change in practice status, please complete the online request form at least 30 days in advance.



COUNCIL NEWS

Election 2021

On March 11, 2021 CMM put out a call for nominations for one vacancy on the Governing Council of the College of Midwives of Manitoba.

In response to this call for nominations, CMM received one nomination from the membership and that nominee agreed to allow their name to stand as a candidate. The following member is therefore considered elected by acclamation.

Congratulations to:

Alfred Sankoh, RM

Practice Location: Prairie Mountain Health - Brandon
Midwifery Services

Initial Date of Registration: May 25, 2015

Council Term: Fall 2021 to Fall 2024

Nominee Statement:

"Thank you for this opportunity to serve with you in progressing the work of the College of Midwives of Manitoba. In my almost 20 years of practicing as a midwife, I have served in different capacities within and outside midwifery. To give you a taste of what I am currently up to. I am currently a member of the IMPP Advisory Team. In PMH, I am on two ethics boards. Also, I am trying to finish my doctorate in education. Life has been busy, but there is always room for more opportunities to serve. So I am looking forward to serving as a council member to the best of my ability."

CMM Council and staff would like to extend a warm welcome and thank you to Alfred for his commitment to the ongoing work of self-regulation.

Welcome to New Members

Cody Kjell, RM

Winnipeg Regional Health Authority

Kailan Robinson, RM

Prairie Mountain Health

Gabrielle Plenert, RM

Winnipeg Regional Health Authority

ADDRESSING RACISM IN THE HEALTHCARE SYSTEM

World events in 2020 highlighted the many ways in which racialized people are not well served by many institutions in our society, including the health care system. Council continues to support education and training in this area for both staff and Council members to help identify ways in which we can make changes in our own interactions and systems.

Council supports the development of an anti-racism statement to publicly declare the CMM's commitment to ending racist practices both within the provision of midwifery care and within our own organization and regulatory policies.

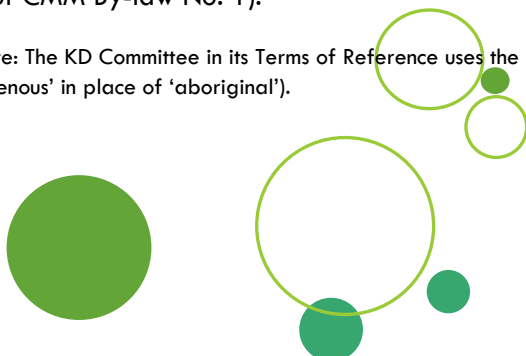
SELF-REGULATION

In our last issue of the CMM Circular in the section about self-regulation, the concept of membership of a governing Board or Council of a self-regulating profession was introduced, specifically elected midwife members and appointed members of the public.

Highlighted now is a very unique provision contained in the *Midwifery Act* since coming into force as legislation on June 12, 2000. Clause 8(1)c of the *Act* mandates that the governing Council of the College of Midwives includes a seat to be held by person appointed by the College committee known as *Kagike Danikobidan* (KD). KD is established by the *Act* and defined as 'a standing committee to advise the college on issues related to midwifery care to aboriginal women'.*

KD strives to address the ongoing issue of equity in access to midwifery education and services. Through Indigenous community and midwife representation KD is committed to bringing a balanced perspective to deliberations and decisions of the College. Presently, and since its inception KD has an important voice in the decision-making abilities of the Council (clauses 7.8 and 7.9 of CMM By-law No. 1).

(* Note: The KD Committee in its Terms of Reference uses the word 'Indigenous' in place of 'aboriginal').



CMM'S RESPONSE TO THE TRUTH AND RECONCILIATION COMMISSION OF CANADA'S CALLS TO ACTION

The College of Midwives of Manitoba (CMM) is committed to acting on the Truth and Reconciliation Commission of Canada's (TRC) Calls to Action. As such, we aim to ensure that midwives provide care that is equitable, accessible, flexible, non-judgmental, nurturing, accepting, respectful and safe. We encourage all midwives to review the TRC's Calls to Action, specifically recommendations number 22, 23, 24 and 33 and consider actions they can take in their practice. The CMM recognizes that midwives have a privileged position in their relationships with clients. We acknowledge the harmful effects of colonization, and policies such as residential schools, on the health and wellbeing of indigenous people. The College of Midwives of Manitoba is committed to ensuring that all midwives are working towards culturally safe midwifery practice.

KEY ACTIONS

The College of Midwives commits to:

1. Include Indigenous awareness and cultural safety in the Core Competencies for Midwives in Manitoba.
2. Include Indigenous awareness and cultural safety courses as a requirement for registration as a midwife in Manitoba.
3. Advocate for inclusion of the following standards in the proposed national midwifery education program accreditation/approval process:
 - a. Indigenous awareness and cultural safety
 - b. Strategies to increase recruitment and retention of Indigenous applicants and teachers
4. Require all registered practicing midwives to participate in continuing education in cultural safety that shall, at a minimum, fulfill the following learning objectives:
 - a. Apply the concepts of cultural safety to practice
 - b. Acknowledge and work towards dismantling stereotypes
 - c. Be aware of indigenous healing practices and modalities
5. Provide the opportunity to hold a sharing and learning circle at the CMM Annual General Meeting for members who have experienced or witnessed culturally unsafe care or teaching.

RANDOM PRACTICE ASSESSMENT NEXT SELECTION – SEPTEMBER 2021

The Quality Assurance Committee of the CMM successfully completed its first Random Practice Assessment (RPA) over the past year and is reminding members that another random selection will take place in the fall of 2021.

When will the selection take place?

Midwives will be randomly selected and notified before September 15th.

Why do we do Random Practice Assessments?

The RPA is intended to be a learning process that supports achieving high quality practice. We anticipate that the results of the assessment will provide midwives with confirmation of areas where their practice meets or exceeds the standards and an opportunity to change any areas of practice where room for improvement is identified.

What's involved in a Random Practice Assessment?

A Random Practice Assessment (RPA) involves 3 distinct areas:

- **A Self-Assessment Questionnaire (SAQ)**
This questionnaire asks the midwife to reflect on various aspects of practice and document their responses. The SAQ takes approximately 2-3 hours to complete. The completed form is then reviewed by the Assessor.
- **Review of QA yearly records**
All QA yearly records for the past five (5) years of practice must be submitted to the CMM for review by the Assessor.
- **Chart Review**
Five (5) client charts from the past two (2) years of practice are chosen randomly and reviewed by the Assessor.

For full details please review the [Random Practice Assessment Overview](#). In addition, the Chart Audit Tool that is used by the Assessor is available to all members in the QA section of their member profile.

COLLEGE EMAILS

CMM sends out regular emails to let midwives know about changes to standards, guidelines and policies, and new guiding documents. To ensure you continue to receive emails from the CMM, please check your spam filters and "promotions" tab in your email inboxes and make sure to mark our emails as not spam or move them to the "primary" tab.

Communication is sent to the email address designated as primary in the CMM Member Portal. To change this setting, login and choose Edit Profile.